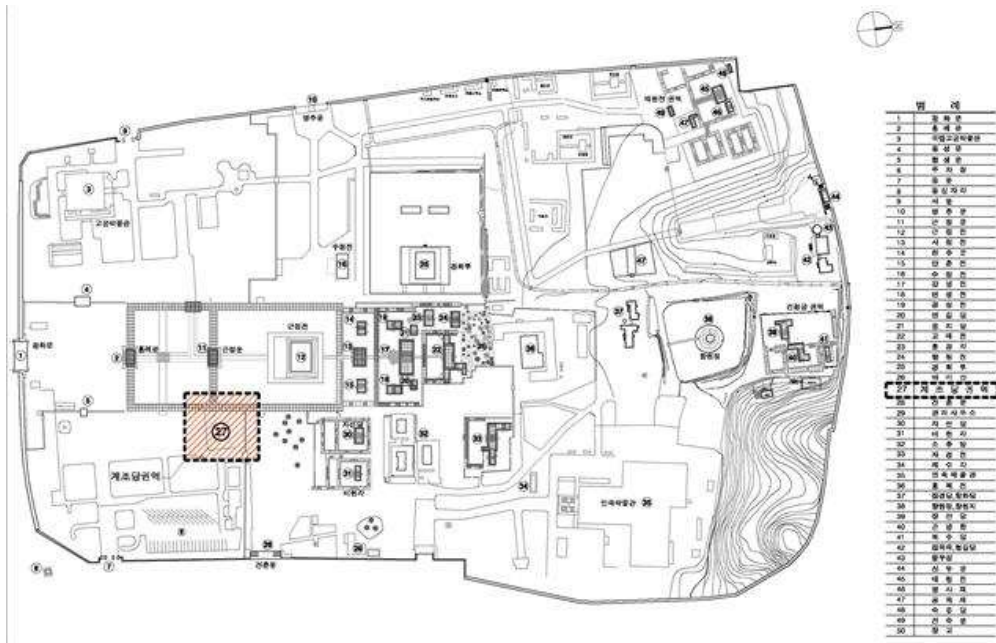


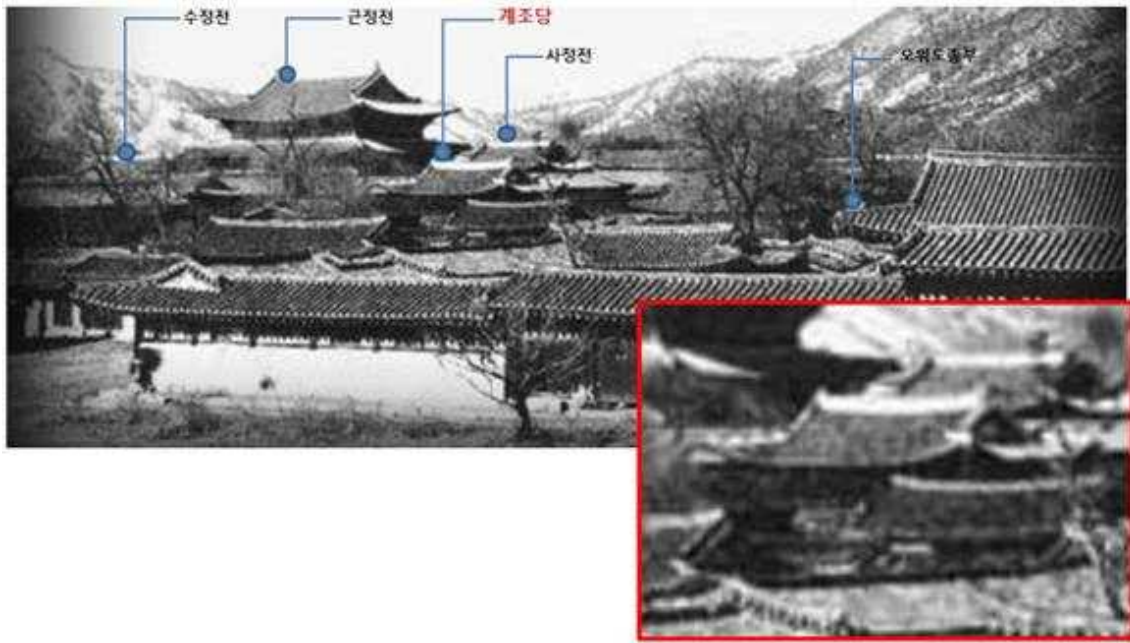
사 진 자 료



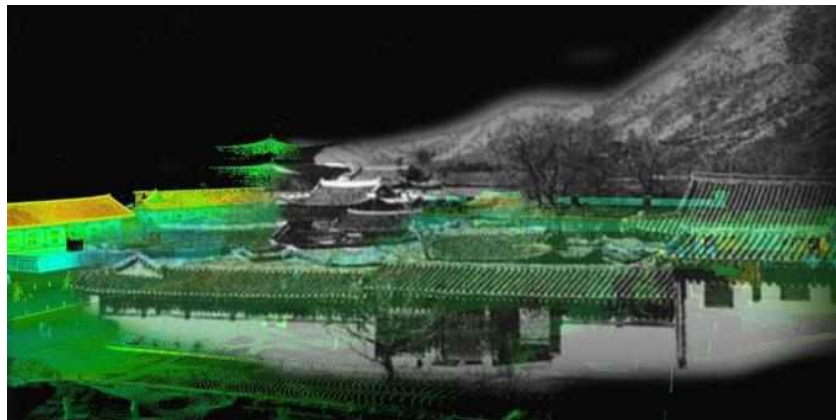
<계조당 권역 복원위치도>



<계조당 권역 복원조감도>



<오위도 총부권역_1910년경 동십자각에서 촬영 추정 (출처: 미상)>



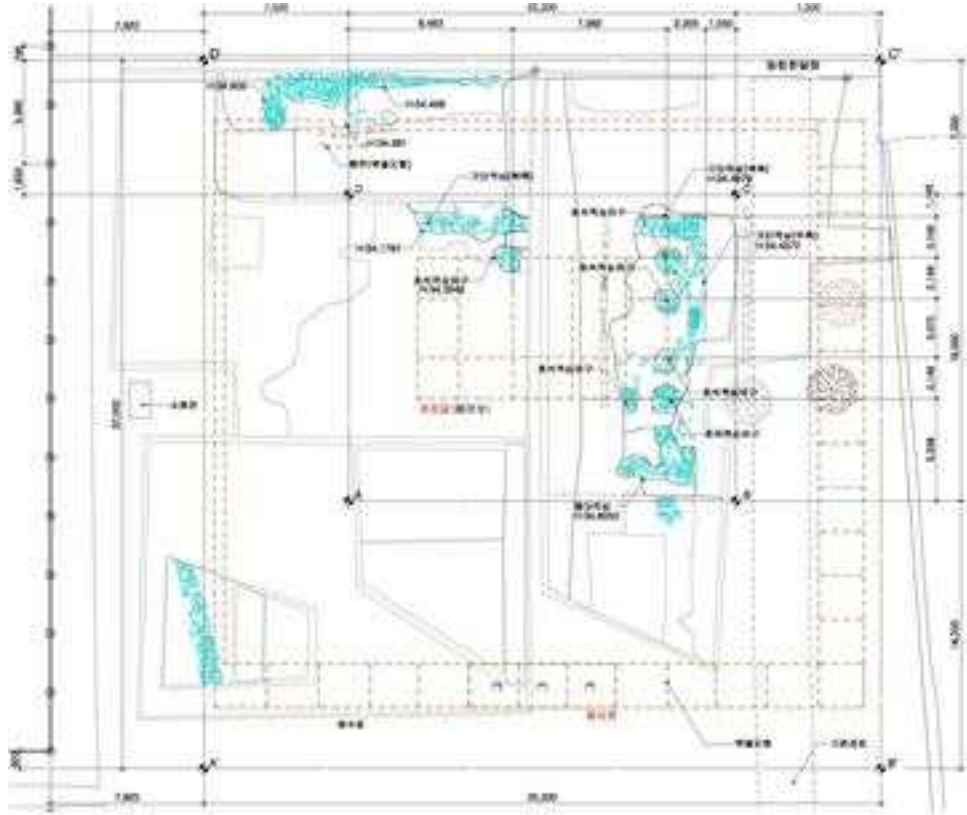
<계조당 권역 3D스캔이미지 + 옛사진(1910) 합성 결과>



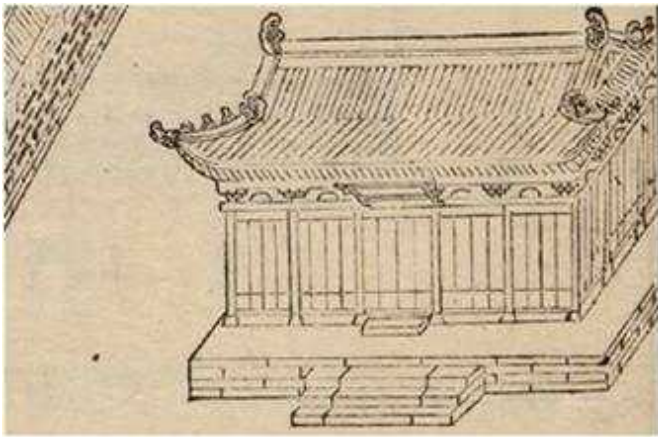
[발굴유구전경1 (남동→북서)]



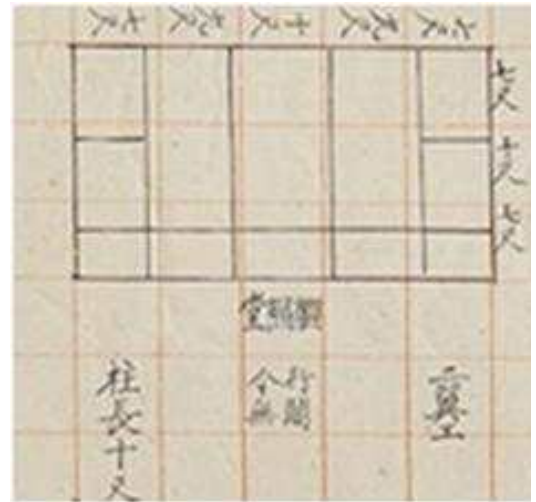
[발굴유구전경2 (남서→북동)]



<계조당 권역 복원발굴 현황>



<임진진찬의궤 근정전도 일부>
(1892년 9월~3월 15일)



<북궐도형 1907년(계조당)>